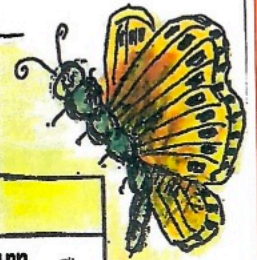

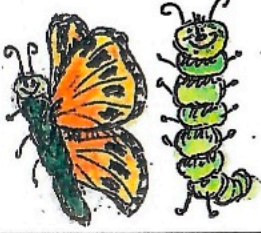

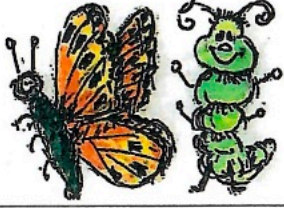
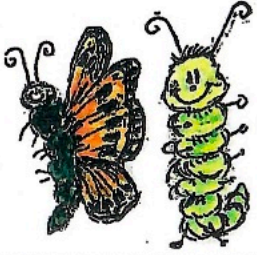





KINDERGARTEN A GRUBEN - STUNDENPLAN SCHULJAHR 2026/27



Zeit	Montag	Dienstag	Mittwoch	Donnerstag	Freitag
08.10 bis 11.40 Uhr Taxi 11.45 Uhr	C. Grünig und T. Bergmann im Wechsel 	Theresa Bergmann 	Theresa Bergmann <i>Turnen</i> 	Theresa Bergmann <i>Waldmorgen</i> 	Theresa Bergmann 
13.40 bis 15.10 Uhr Taxi 15.15 Uhr		Theresa Bergmann 			

Theresa Bergmann:

Kinder 1. Kindergartenjahr (KG1)
Räupli

/ Carole Grünig

Kinder 2. Kindergartenjahr (KG2)
Schmetterling

