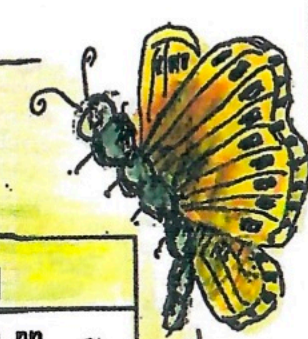
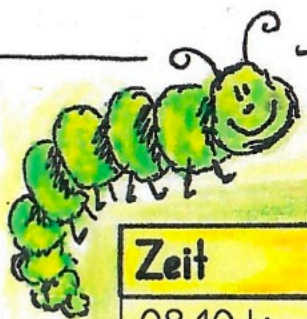








KINDERGARTEN B GRUBEN - STUNDENPLAN SCHULJAHR 2026/27



Zeit	Montag	Dienstag	Mittwoch	Donnerstag	Freitag
08.10 bis 11.40 Uhr Taxi 11.45 Uhr	Raya Annen 	Angela Ambort 	Theresa Bergmann <i>Turnen</i>  Emily und Angelos	Raya Annen <i>Waldmorgen</i> 	Raya Annen nn 
13.40 bis 15.10 Uhr Taxi 15.15 Uhr		Theresa Bergmann  Angelos			

Raya Annen:

/ Theresa Bergmann:

/ Angela Ambort:

Kinder 1. Kindergartenjahr (KG1)
Räupli

Kinder 2. Kindergartenjahr (KG2)
Schmetterling

